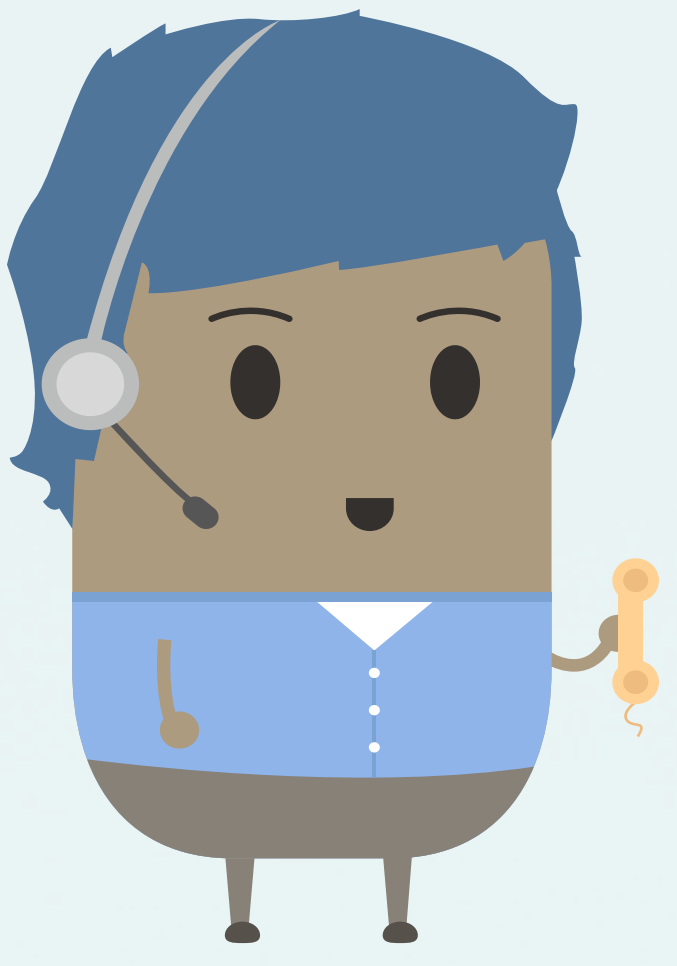
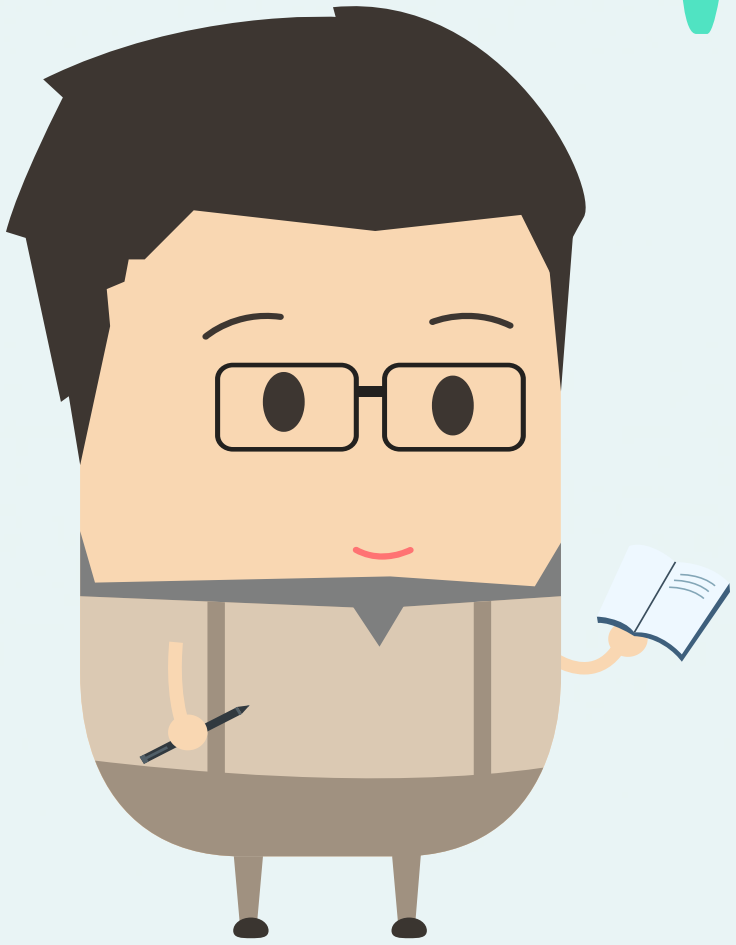


I am a social worker



I respond to safeguarding concerns by working with our service users to put plans in place which help to keep them safe from abuse and neglect

I am a housing officer



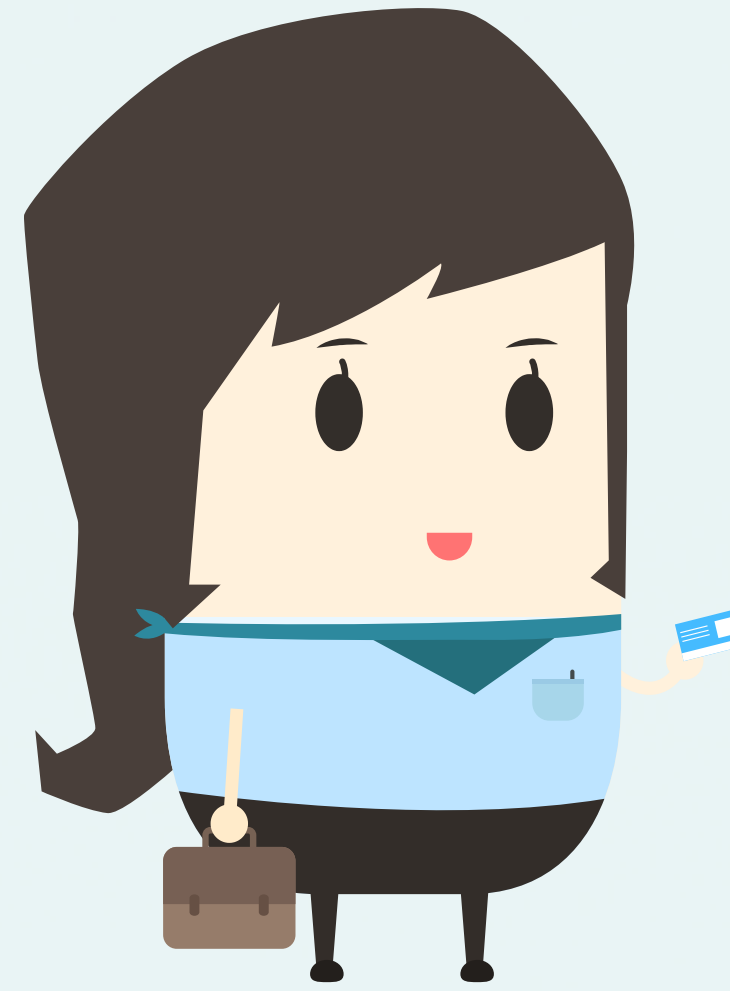
I help people living in our housing facilities and provide support and advice to vulnerable adults and families

I am a health professional



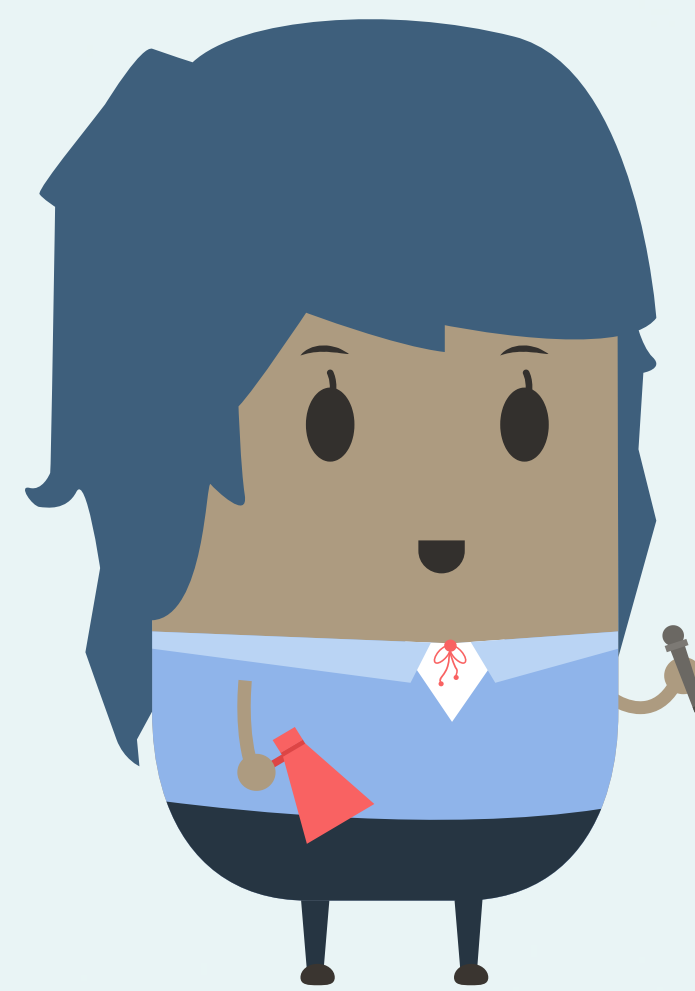
I support colleagues in making decisions in a patient's best interests when that person has lost capacity to make decisions for themselves

I am a Trading Standards officer



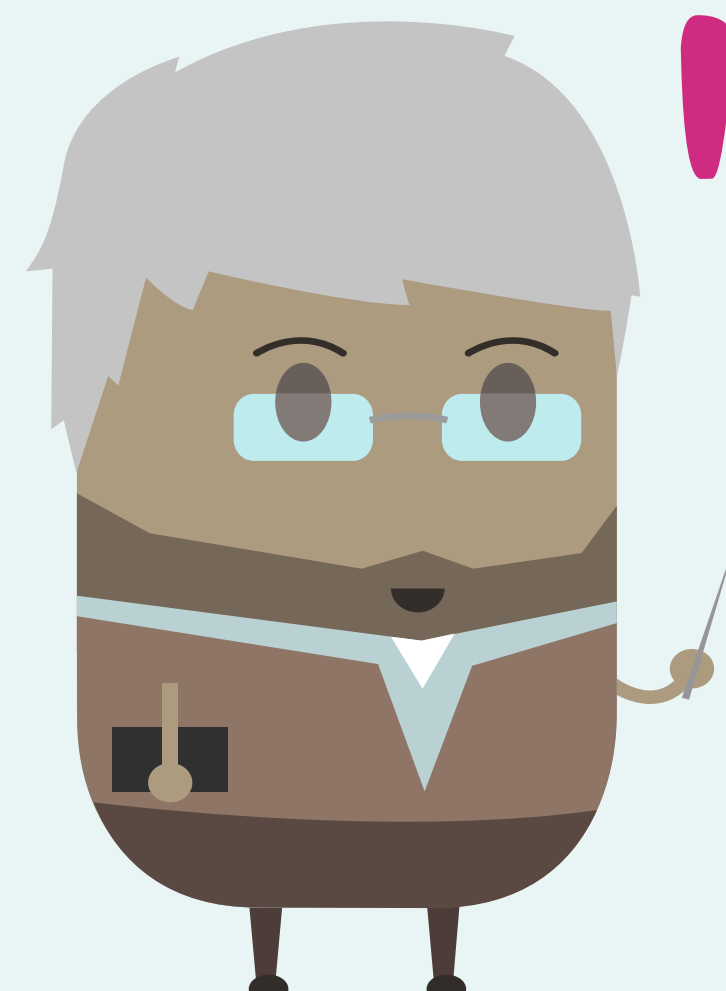
I investigate reports of cold calling and concerns that a business may be targeting vulnerable residents in order to scam them

I am an advocate



I support people who have difficulty speaking up to have their views and wishes listened to and provide independent support to help people understand the safeguarding adults process

I am a Lambeth resident



I care about my community and help to look out for anyone who might be vulnerable and need a helping hand