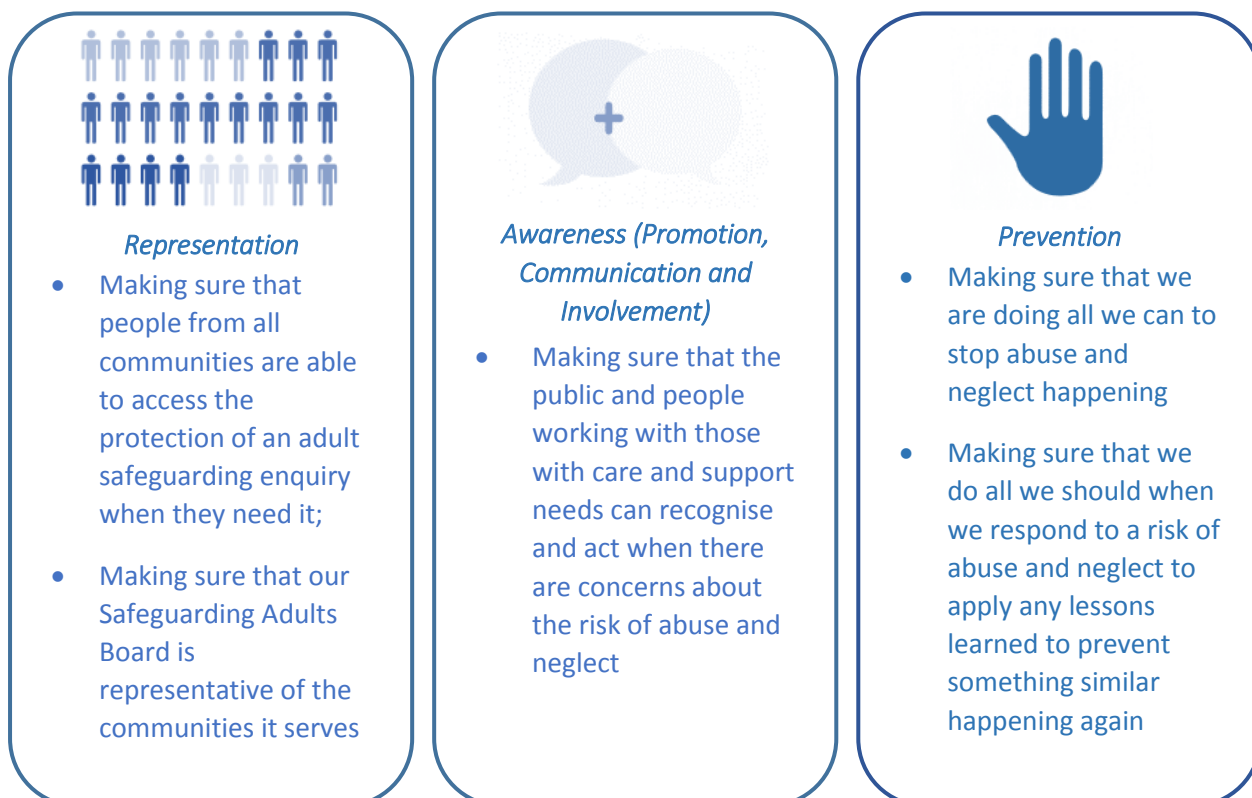


Three-Year strategic plan 2017 to 2020

Statutory requirements

As well as its main objective the Care Act 2014 sets out the board's specific functions. One of these is that it must publish a strategic plan for each financial year that sets out how it will meet its main objective and what the members will do to achieve these objectives.

In order to give clear direction the Lambeth Safeguarding Adults Board (LSAB) produced an overarching plan for the three years from 2017/18 to 2019/20 which focused on **three key priorities**:



These key priorities have informed individual work-plans for each year, with plans to

1. measure baselines (2017-18)
2. make improvements (2018-19)
3. and measure our impact (2019-20)

The wider Lambeth context

This plan has been developed in a wider strategic context which has seen further integration within teams and services. A key example of this is the [Lambeth Together](#) development which brings together different organisations and stakeholders, to work as one to co-ordinate and deliver health and care services in the whole Borough.

The LSAB will continue to maintain oversight in decision making, processes and procedures. This will help us to have the necessary assurance that individual organisations do not lose focus whilst moving to this new way of working. Furthermore, as a continuation to the ethos of the Lambeth Together project, the LSAB will continue to explore how we make better use of our community assets in order to achieve our strategic objectives.

Work-plan for 2019-20

The below plan sets out specific objectives which the LSAB will work towards over the course of the next year, with an overall aim of measuring the impact of work undertaken in 2018-19.

There are also three identified themes which will feed in to all pieces of work:

- Self-neglect: this is a recurring issue which features in many Safeguarding Adults Reviews undertaken nationally. This issue will be considered when responding to our objective to prevent abuse and neglect, and manage risk in private and family life.
- Modern Slavery: the LSAB will continue to focus on raising awareness of this issue and seek to ensure that the responses to local cases of modern day slavery are occurring effectively.
- Financial abuse: in 2019-20 the LSAB will have a targeted focus on financial services, and we will look to work closely with these services to improve responses to adult safeguarding.

Strategic plan for 2019/20

| Theme | Area | Aim | 2019/20 | July 19 | October 19 | January 20 | April 20 |
|----------------|------------|--|------------------|--|---|---|---|
| Representation | Individual | The Board has assurance that recognising and acting on adult safeguarding concerns happens for people with care and support needs in all communities in Lambeth. | Measure progress | Update on developments in this work by CRG (CRG) | | Report to be presented to the Board which provides an update on safeguarding adults data mapped against equalities data and whether there has been changes(P&Q) | |
| | | Making Safeguarding Personal is applied in ways that take account of issues of diversity and difference | Measure progress | | LSAB to be updated on the work underway to increase engagement with service users, with report detailing service user feedback in this area (CRG) | | |
| | Strategic | The Board membership better represents the population of Lambeth in terms of the protected characteristics | Measure progress | | The Chair to provide an update on any improvements in this area (LSAB Chair) | | The Chair to provide a report on the improvements in this area (LSAB Chair) |

| Theme | Area | Aim | 2019/20 | July 19 | October 19 | January 20 | April 20 |
|--|--|--|-----------------------------|---|---|--|---|
| Awareness (Promotion, communication and involvement) | Abuse and neglect in private or family life | People in Lambeth with care and support needs and their friends and family are aware of adult safeguarding enquiries, make use of them, and find them useful | Measure progress | LSAB to receive report outlining (i) proposals for multi-agency training (ii) guidance for adult safeguarding supervision (P&Q) | LSAB to receive a report on the outcomes of actions taken to improve awareness of adult safeguarding in Lambeth, which details plans to measure and report back on progress (CRG/P&Q) | | LSAB to receive a report on the progress made (e.g. following new survey results) (CRG/P&Q) |
| | Abuse and neglect in communities | There are effective multi-agency responses to community based risks to people with care and support needs | | | LSAB to receive a report from Community Safety partners. | | |
| | Abuse and neglect within services for people with care and support needs | Those working with people with care and support needs know how to recognise and act on the risk of abuse or neglect, and they are doing so | Focus on financial services | | | LSAB to receive an update on the work to engage financial services on adult safeguarding issues. (P&Q) | |

| Theme | Area | Aims | 2019/20 | July 19 | October 19 | January 20 | April 20 |
|------------|--|---|------------------|---------|---|---|---|
| Prevention | Abuse and neglect in private or family life | <p>The number of adult safeguarding concerns relating to abuse and neglect in private or family life reduces</p> <p>The effectiveness of adult safeguarding enquiries in reducing risks in private and family life improves</p> | Measure progress | | Board to receive report on proposed multi-agency framework which enables an agreed approach to responding to high-risk cases. (P&Q) | LSAB to receive a report updating the progress on proposal report given in April 19 | |
| | Abuse and neglect in communities | <p>The number of adult safeguarding concerns relating to abuse and neglect in communities reduces</p> <p>The effectiveness of adult safeguarding enquiries in reducing community-based risks improves</p> | Measure progress | | | LSAB to receive a report from the Community Safety Partnership on improvements made in this area | |
| | Abuse and neglect within services for people with care and support needs | <p>The number of adult safeguarding concerns relating to risks within services for people with care and support needs</p> <p>The effectiveness of adult safeguarding enquiries in reducing risks within services for people with care and support needs</p> | Measure progress | | | LSAB to receive a report from Social Care Commissioners (and where possibly Social Care Providers) which details improvements in this area. | LSAB to receive a report from Health Providers which details improvements in this area. |